

AENC-MMAC-ENG-DWG-0085

Norwich to Tilbury

Volume 2: Plans, Drawings and Sections

**Document: 2.6.1 Design and Layout Plans - Subs & Cables -
Tracked Changes Version**

Final Issue C

June 2026

Planning Inspectorate Reference: EN020027

Infrastructure Planning (Applications: Prescribed Forms and Procedure)
Regulations 2009 Regulation 5(2)(o)

nationalgrid



THE NATIONAL GRID (NORWICH TO TILBURY) ORDER
 DESIGN AND LAYOUT PLANS
 INDICATIVE TILBURY NORTH SUBSTATION LAYOUT
 REGULATION 5(2)(o)
 SECTION H, SHEET 1 OF 1
 THURROCK COUNCIL

Application Document 2.6.1

LEGEND

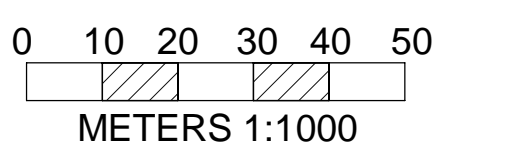
- Proposed equipment
- Proposed overhead line/cable works
- Future equipment - Note 5
- Substation permanent access
- AIL Laydown Area
- Order Limits

LIST OF ABBREVIATIONS

- PRR - Portable Relay Room
- CB - Circuit Breaker
- VT - Voltage Transformer
- SA - Surge Arrester
- PI - Post Insulator
- ES - Earth Switch
- SGT - Supergrid Transformer
- DISC - Disconnector
- STATCOM - Static Synchronous Compensator
- SHR - Shunt Reactor
- DG - Diesel Generator
- SVC - Static Var Compensator
- DRC - Dynamic Reactive Compensator
- EV - Electric Vehicle
- GIS - Gas Insulated Switchgear
- QB - Quad Booster
- DNO - Distribution Network Operator
- ET - Earthing Transformer

Notes

1. These plans are indicative and will sit within the order limits. Due to the need for future flexibility, National Grid will be applying for order limits and limits of deviation within its DCO, within which any final alignment would lie.
2. For additional detail on the plan sites, please refer to the Guide to Plans (document reference 2.0), located in the volume 2 of the DCO application.
3. All dimensions are approximate and indicated in metres (m) unless noted otherwise.
4. This drawing is scaled at paper size A1, therefore any prints taken at smaller sizes will affect accuracy of the measurement units and should not be scaled against.
5. Denotes areas reserved for future equipment requirements.
6. The voltage of the overhead line shown is 400kV.



BACKGROUND MAPPING INFORMATION HAS BEEN REPRODUCED FROM THE ORDINANCE SURVEY BY PERMISSION OF ORDINANCE SURVEY OF THE CONTROLLER OF HIS MAJESTY'S STATIONERY OFFICE. © CROWN COPYRIGHT AND DATABASE RIGHTS (2025) LICENCE OS100024241 AND AC0000807948.

Issue	Date	Remarks	Drawn	Checked	Approved
B	JUN-2026	For deadline five	SM	GR	KR
A	AUG-2025	For DCO submission	SM	GR	KR

THE NATIONAL GRID
 (NORWICH TO TILBURY) ORDER
 DESIGN AND LAYOUT PLANS
 INDICATIVE TILBURY NORTH SUBSTATION LAYOUT
 REGULATION 5(2)(o)
 SECTION H, SHEET 1 OF 1
 THURROCK COUNCIL



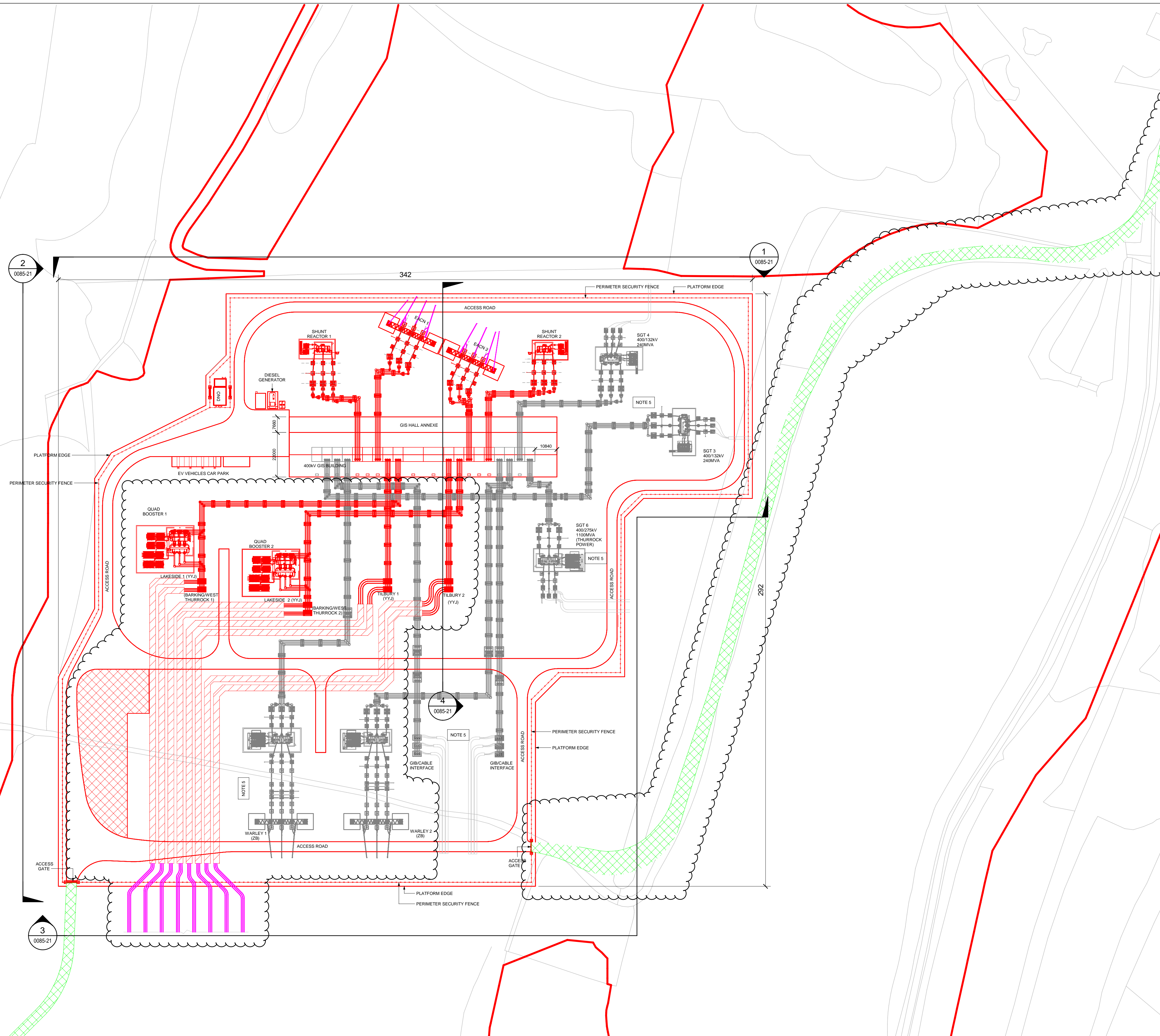
PINS Application Number

EN020027

National Grid Drawing Reference

AE-NC-MMAC-ENG-DWG-0085-20

Scale	Sheet Size	Sheet	Issue
1:1000	A1	SHEET 1 OF 1	B



THE NATIONAL GRID (NORWICH TO TILBURY) ORDER
 DESIGN AND LAYOUT PLANS
 INDICATIVE TILBURY NORTH SUBSTATION ELEVATIONS
 REGULATION 5(2)(o)
 SECTION H, SHEET 1 OF 1
 THURROCK COUNCIL

LEGEND

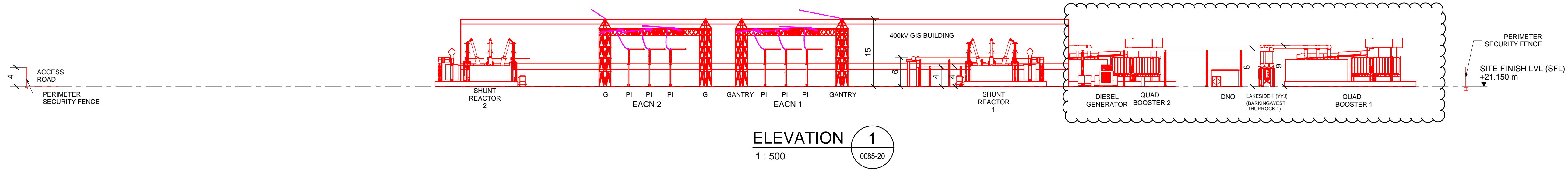
- Proposed equipment
- Proposed overhead line works

LIST OF ABBREVIATIONS

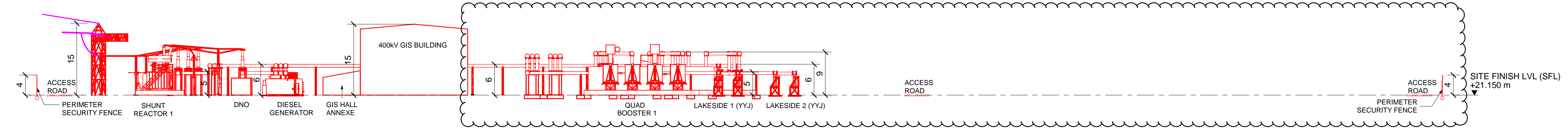
- PRR - Portable Relay Room
- CB - Circuit Breaker
- CT - Current Transformer
- VT - Voltage Transformer
- SA - Surge Arrester
- PI - Post Insulator
- ES - Earth Switch
- SGT - Supergrid Transformer
- DISC - Disconnector
- STATCOM - Static Synchronous Compensator
- SHR - Shunt Reactor
- DG - Diesel Generator
- SVC - Static Var Compensator
- DRC - Dynamic Reactive Compensator
- EV - Electric Vehicle
- GIS - Gas Insulated Switchgear
- QB - Quad Booster
- DNO - Distribution Network Operator
- ET - Earthing Transformer

Notes

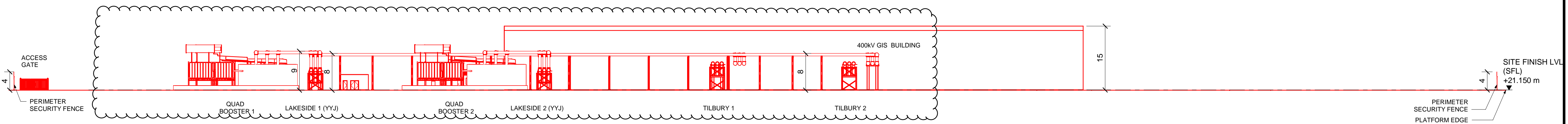
1. These plans are indicative and will sit within the order limits. Due to the need for future flexibility, National Grid will be applying for order limits and limits of deviation within its DCO, within which any final alignment would lie.
2. For additional detail on the plan sites, please refer to the Guide to Plans (document reference 2.0), located in the Volume 2 of the DCO application.
3. All dimensions are approximate and indicated in metres (m) unless noted otherwise.
4. This drawing is scaled at paper size A1, therefore any prints taken at smaller sizes will affect accuracy of the measurement units and should not be scaled against.
5. The voltage of the overhead line shown is 400kV.



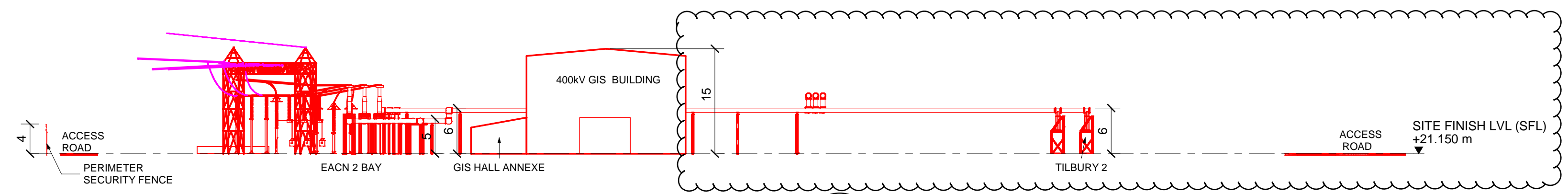
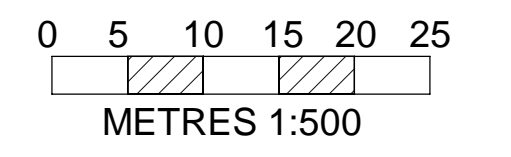
ELEVATION 1
 1 : 500



ELEVATION 2
 1 : 500



ELEVATION 3
 1 : 500



ELEVATION 4
 1 : 500

Issue	Date	Remarks	Drawn	Checked	Approved
B	JUN-2026	For deadline five	SM	GR	KR
A	AUG-2025	For DCO submission	SM	GR	KR

THE NATIONAL GRID
 (NORWICH TO TILBURY) ORDER
 DESIGN AND LAYOUT PLANS
 INDICATIVE TILBURY NORTH SUBSTATION ELEVATIONS
 REGULATION 5(2)(o)
 SECTION H, SHEET 1 OF 1
 THURROCK COUNCIL



PINS Application Number			
EN020027			
National Grid Drawing Reference			
AENC-MMAC-ENG-DWG-0085-21			
Scale	Sheet Size	Sheet	Issue
1: 500	A1	SHEET 1 OF 1	B

National Grid plc
National Grid House,
Warwick Technology Park,
Gallows Hill, Warwick.
CV34 6DA United Kingdom

Registered in England and Wales
No. 4031152
nationalgrid.com